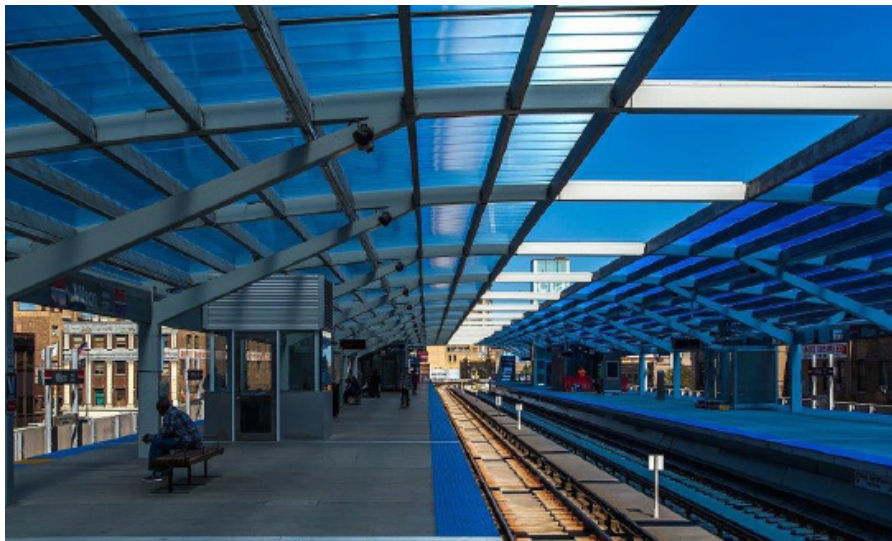




SERIES 2500 POLYCARBONATE CANOPY SYSTEM



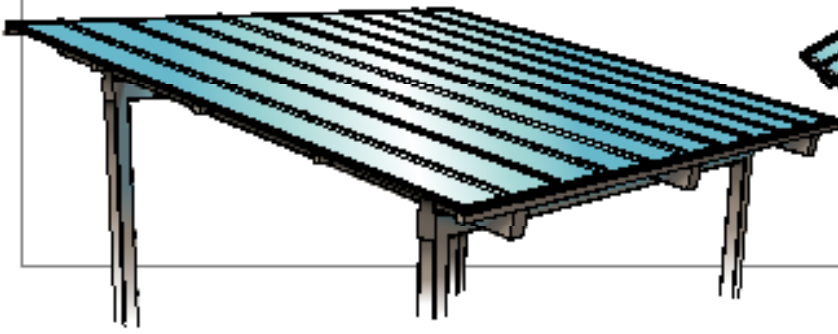
Duo-Gard's standing seam polycarbonate canopy system can be field fabricated and cold formed to create true radius designs. Our engineered framing profile is designed for long expanses with minimal mullions and structural support. The 20mm polycarbonate panel is co-extruded with UV inhibitor on both sides, which can be manipulated for varied degrees of light transmission. It's hollow cell structure provides high-performance flexibility and shading; creating an aesthetically pleasing and cost effective solution for any project.



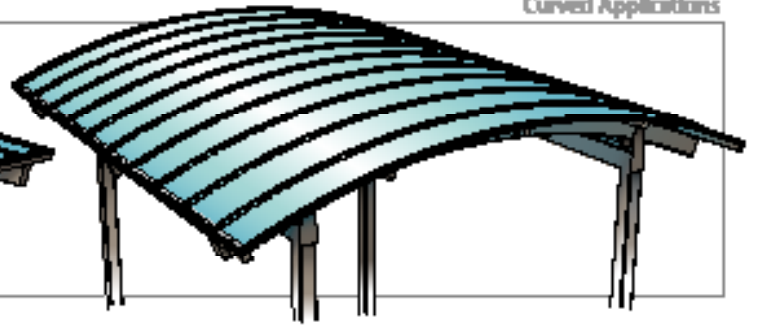
DUO-GARD

TOGETHER BY DESIGN.™

Sloped Applications

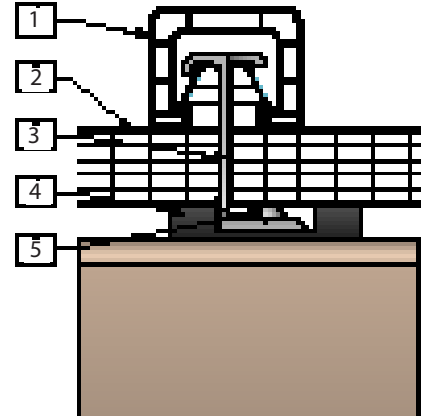


Curved Applications



SYSTEM SPECIFICATIONS

Panel Thickness	20 mm
Panel Width	23-5/8"
Panel Length	Up to 40'
Panel Profile	6-wall with integral upturn batten tabs along the two long side edges
Standard Colors	Clear, Opal, Bronze, Green, Blue *Contact Duo-Gard for more colors and finishes
Framing System	Aluminum; Anodized, Kynar or Tnemec finishes



SYSTEM COMPONENTS KEY

- 1 | Polycarbonate Batten Cap (Clear)
- 2 | 20mm Batten Polycarbonate Sheet
- 3 | 20 BTC Aluminum Batten Clip
- 4 | 20BTS TPV Separator
- 5 | Mounting Screws



TEST REPORT CERTIFICATION

TEST STANDARD	TEST DESCRIPTION	RESULTS
ASTM D1929	Ignition Temperature	896 Degrees Fahrenheit
ASTM D2843	Density of Smoke	71%
ASTM D635	Burn Extent	CC1 Rating: Less than 1" burn extent
ASTM E84	Flame Spread	Class A: 10
	Smoke Developed	Class A: 20
EN 410 ed	Color Change	No more than 6% over 10 years
ASTM D1925	Yellowness	Less than 10 delta over 10 years

* Contact Duo-Gard for more testing information