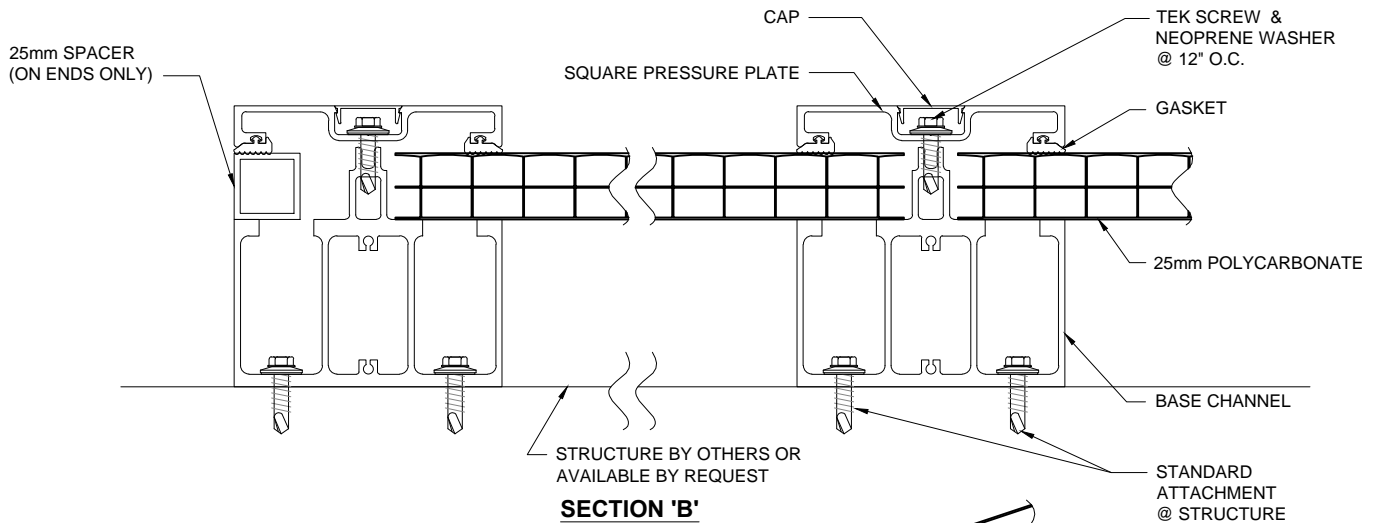
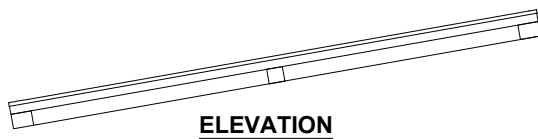
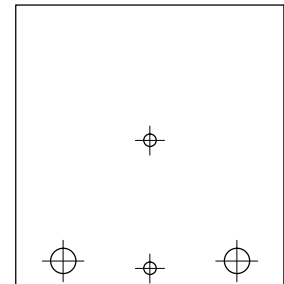


NOTE CONDITION:
WEEP HOLES ONLY
APPLY TO EAVE END

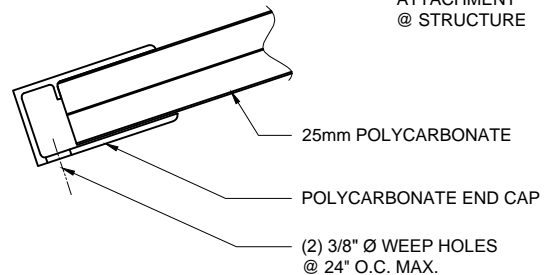


STANDARD ATTACHMENT:
ALUMINUM:
#12 x 1" TEK SCREW W/ #3 TIP & NEOPRENE WASHER

STEEL:
#12 x 2" TEK SCREW W/ #5 TIP & NEOPRENE WASHER

WOOD:
1/4" x 2" LAG SCREW W/ NEOPRENE WASHER

NOTE:
ATTACHMENT METHODS & SPACING BASED ON A
STANDARD 20 p.s.f. COMBINED LOAD. CONTACT
DUO-GARD TO DISCUSS ALTERNATE
LOAD CONDITIONS.



DUO-GARD
FORGE AHEAD™

Duo-Gard Industries, Inc.
Tel (734) 207-9700 Fax (734) 207-7995
www.duo-gard.com

THIS DRAWING IS PROPRIETARY AND FOR THE SOLE USE OF OUR
CUSTOMER AND MAY NOT BE COPIED OR REPRODUCED WITHOUT
PRIOR WRITTEN CONSENT FROM DUO-GARD INDUSTRIES, INC.
LEAD TIME BEGINS UPON RECEIPT OF SIGNED SHOP DRAWINGS

DESCRIPTION

SERIES 3800 BPC

SYSTEM 3825-3S

DWN BY	DRW'G DATE	SCALE	PAGE	OF	DRWNG #
UH	02/23/17	NTS	1	1	3825-3S G-25-3W SLOPED