
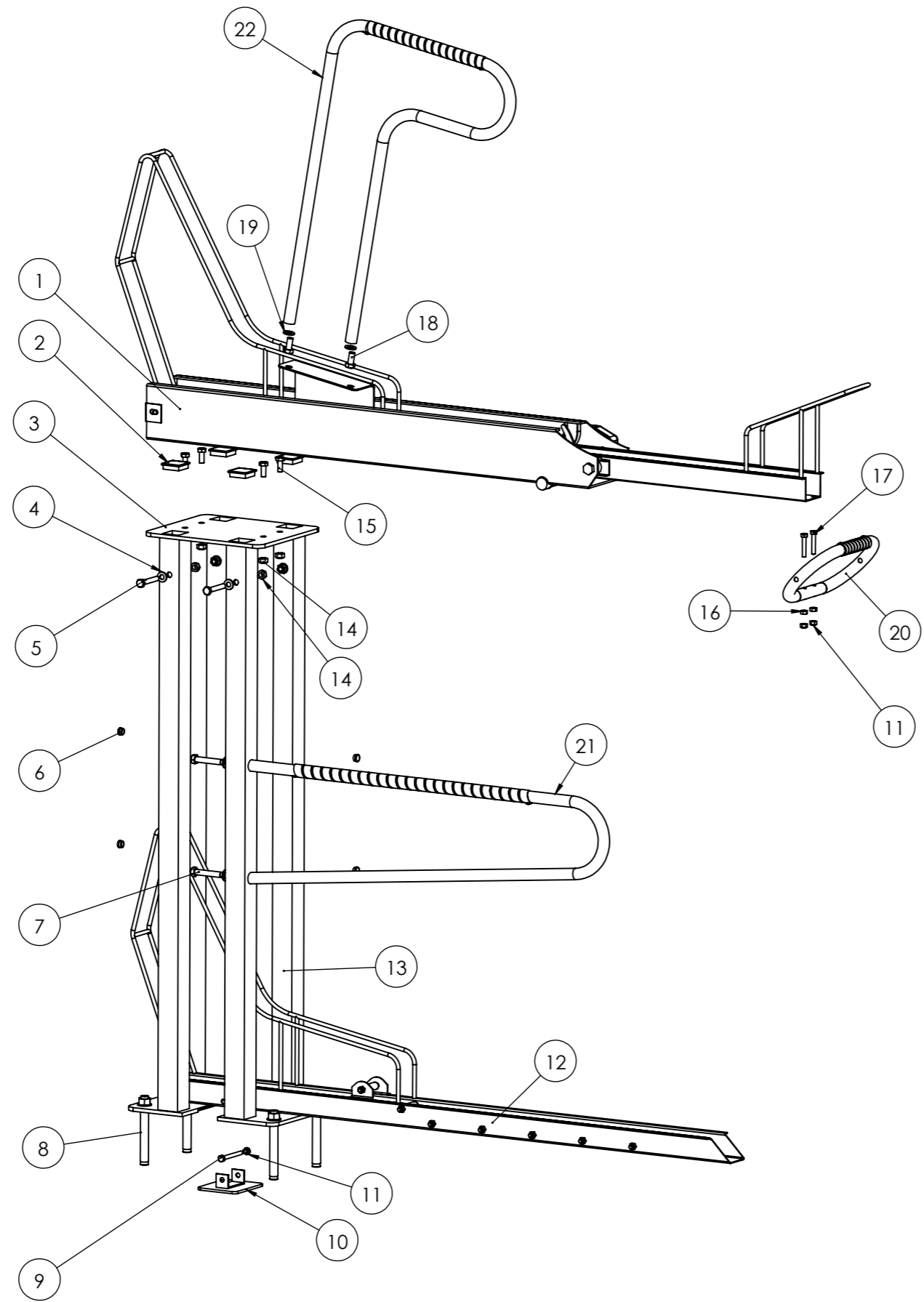


MATERIAL DESCRIPTION: -				WEIGHT: kg	
FINISH: -		SW FILE: LS80313-CBR2GS-LOW ASSM			
SCALE: 1:15 AT A3					
LINEAL TOLERANCES		ANGULAR TOLERANCES			
1.0 to 250 ± 0.2	250 to 500 ± 0.5	500 to 1000 ± 1.0	1000 to 5000 ± 2.5	± 0.5°	
 THIRD ANGLE PROJECTION					



HEAD OFFICE: 18 Reliance Drive, Tuggerah NSW 2258
 Phone +61 2 4353 3377 - Fax +61 2 4353 2255 - Email lvsales@l-v.com.au
 © COPYRIGHT 2015 - ALL INTELLECTUAL PROPERTY RIGHTS RESERVED

ISSUED FOR: -		DRAWN BY: LIBO	
JOB No. -	CLIENT/SITE: -	APPROVED BY: -	
MODEL DESCRIPTION: CBR2GSA-FULLY ASSM			
ITEM: LS80313	REV: D4 INDEX: -	DRAWING DATE: 2016/7/26	SHEET: 1 OF 2



BILL OF MATERIALS					
ITEM NO.	low/Defa ult/Q TY	ITEM	DESCRIPTION	LENGTH	WIDTH
1	1	LS80349	VARIOUS TOP RACK ASSM		
2	4	LS28104	PLASTIC 45*45 CAP	-	-
3	1	LS80346	45*45*2 SHS MAIN POST PART C	-	-
4	8	LS28080	NYLON WASHER ROUND M10 x 2.5 NYLON	-	-
5	4	LS28321	SS304 BOLT HEX M10 x 65 SS304		
6	4	LS28092	PLASTIC Ø14 CAP	-	-
7	2	LS28328	SS304 BOLT HEX M12 x 65 SS304		
8	4	LS28042	ZP DYNABOLT 18mm (M14) x 120mm GAL (DP20080GH)	-	-
9	1	LS28310	SS304 BOLT HEX M8 x 80 SS304		
10	1	LS80341	MS PLATE CBR2GS NEW BASE PLATE A	-	-
11	3	LS28001	SS304 NUT HEX M8 x 1.25 SS304 NYLOC		
12	1	LS80339	BOTTOM BIKE WHEEL TRACK ASSM		
13	2	LS80343	50*50*2 SHS MAIN POST LOW	-	-
14	8	LS28002	SS304 NUT HEX M10 x 1.5 SS304 NYLOC		
15	4	LS28317	SS304 BOLT HEX M10 x 25		
16	2	LS28012	SS304 NUT HEX M8 x 1.25 SS304		
17	2	LS28306	SS304 BOLT HEX M8 x 45 SS304		
18	2	LS28326	SS304 BOLT HEX M12 x 25 SS304		
19	4	LS28081	NYLON WASHER ROUND M12 x 2.5 NYLON	-	-
20	1	LS80298	CBR2GS-HANDLE ASSM		
21	1	LS80296	U SECURITY RAIL ASSM		
22	1	LS80297	SECURITY RAIL ASSM	L	

MATERIAL DESCRIPTION:				
-				
FINISH: -				WEIGHT: kg
SCALE: 1:15 AT A3		SW FILE: LS80313-CBR2GS-LOW ASSM		
LINEAL TOLERANCES		ANGULAR TOLERANCES		
1.0 to 250 ± 0.2	250 to 500 ± 0.5	500 to 1000 ± 1.0	1000 to 5000 ± 2.5	± 0.5°
THIRD ANGLE PROJECTION				




LEDA
 PERIMETER SECURITY PRODUCTS

HEAD OFFICE: 18 Reliance Drive, Tuggerah NSW 2258
 Phone +61 2 4353 3377 - Fax +61 2 4353 2255 - Email lvsales@l-v.com.au
 © COPYRIGHT 2015 - ALL INTELLECTUAL PROPERTY RIGHTS RESERVED

ISSUED FOR: -		DRAWN BY: LIBO	
JOB No. -	CLIENT/SITE: -	APPROVED BY: -	
MODEL DESCRIPTION: CBR2GSA-FULLY ASSM			
ITEM: LS80313	REV: D4 INDEX: -	DRAWING DATE: 2016/7/26	SHEET: 2 OF 2