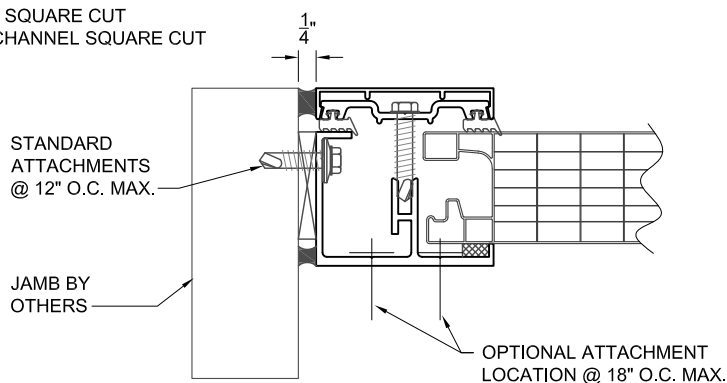


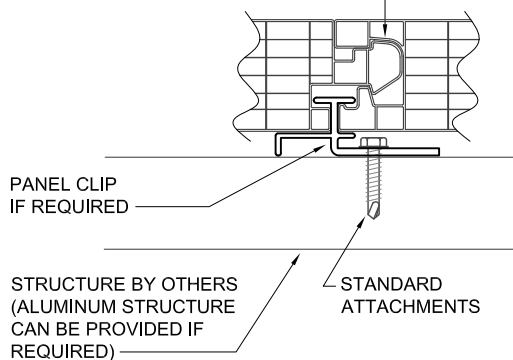
SECTION 'A'

NOTE CORNER CONDITION:
CAP(S) SQUARE CUT
BASE CHANNEL SQUARE CUT



SECTION 'B'

INTERLOCKING CONNECTION



SECTION 'D'

STANDARD ATTACHMENTS:

ALUMINUM:
#12 x 1" TEK SCREW W/ #3 TIP & NEOPRENE WASHER
#12 x 2" TEK SCREW W/ #3 TIP & NEOPRENE WASHER

STEEL:
#12 x 2" TEK SCREW W/ #5 TIP & NEOPRENE WASHER

WOOD:
1/4" x 2" LAG SCREW W/ NEOPRENE WASHER

NOTE:
ATTACHMENT METHODS & SPACING BASED ON
STANDARD 90 MPH WIND LOAD CONDITIONS.
CONTACT DUO-GARD TO DISCUSS ALTERNATE
LOAD CONDITIONS.

STRUCTURE BY OTHERS
(ALUMINUM STRUCTURE
CAN BE PROVIDED)

OPTIONAL ATTACHMENT
LOCATION @ 18" O.C. MAX.

(2) 3/8" Ø WEEP HOLES
1" APART @ 36" O.C. MAX.
(MIN. 1" FROM SCREWS)
(DRILL THROUGH OUTER &
INNER WALLS AS SHOWN)

STANDARD ATTACHMENTS
@ 12" O.C. MAX. INSTALLED
THROUGH 1" x 1" x 1/2"
NEOPRENE SPACER FULLY
SET IN SEALANT

SECTION 'C'
OPTIONAL ATTACHMENT

ALUMINUM FLASHING
EMBED IN BED OF
SEALANT

SILL BY OTHERS



Duo-Gard Industries, Inc.
Tel (734) 207-9700 Fax (734) 207-7995
www.duo-gard.com

THIS DRAWING IS PROPRIETARY AND FOR THE SOLE USE OF OUR
CUSTOMER AND MAY NOT BE COPIED OR REPRODUCED WITHOUT
PRIOR WRITTEN CONSENT FROM DUO-GARD INDUSTRIES, INC.
LEAD TIME BEGINS UPON RECEIPT OF SIGNED SHOP DRAWINGS

DESCRIPTION

SERIES 3000 BPC

SYSTEM 3540-7TG

DWN BY	DRW'G DATE	SCALE	PAGE	OF	DRWNG #
JL	6/15/16	NTS	1	1	3540-7TG G-40-TG FLUSH