



**DUO-GARD**

TOGETHER BY DESIGN™

**TRANSLUCENT CANOPIES**  
**CELLULAR POLYCARBONATE**





## SERIES 2500 STANDING SEAM CANOPY SYSTEM

A lightweight glazing system with the ability to create true radius designs.

- Panels available in 2' nominal widths
- 20mm panel thickness
- Minimum 2:12 slope required
- Panels can be cold formed to create true radius
- Panels extruded with UV protection on both sides

Available upon request:

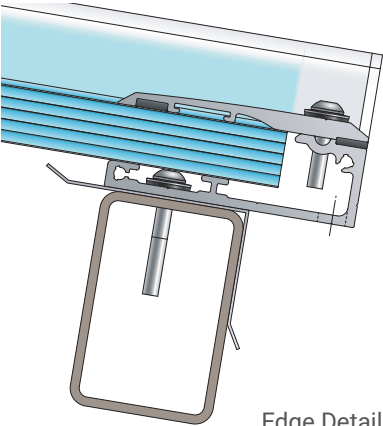
- BIM/REVIT models
- System drawings
- Specifications
- Samples



STANDARD COLORS

- BLUE
- CLEAR
- GREEN
- BRONZE
- GREY
- OPAL

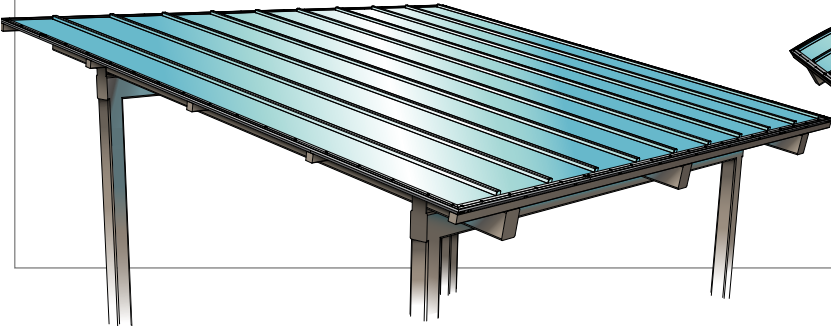
CUSTOM COLORS AVAILABLE



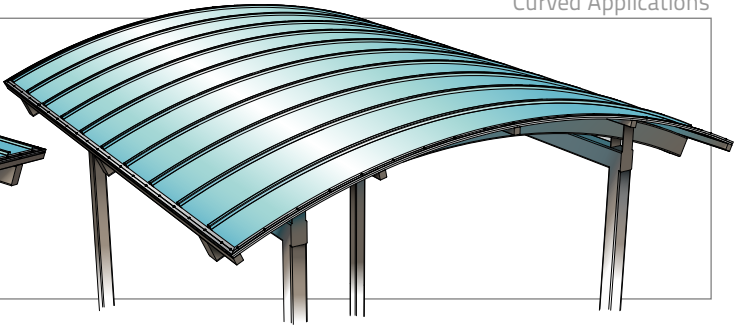
Edge Detail



Sloped Applications



Curved Applications



SLOPED APPLICATION - PURLIN SPACING & GENERAL REQUIREMENTS										
MAX. PURLIN SPACING IS: " O.C.		DOWNWARD DESIGN LOAD (p.s.f.)								
		20	30	40	50	60	70	80	100	120
WIND SPEED (m.p.h.)	WIND UPLIFT (p.s.f.)	PURLIN SPACING (inches)								
115	57	48	48	44	42	40	38	36	34	34
120	62	44	44	44	42	40	38	36	34	34
125	67	42	42	42	42	40	38	36	34	34
130	72	38	38	38	38	38	38	36	34	34
135	78	36	36	36	36	36	36	36	34	34
140	84	32	32	32	32	32	32	32	32	32
150	96	28	28	28	28	28	28	28	28	28
160	109	24	24	24	24	24	24	24	24	24

CURVED APPLICATION - PURLIN SPACING & GENERAL REQUIREMENTS										
MAX. PURLIN SPACING IS: " O.C.		DOWNWARD DESIGN LOAD (p.s.f.)								
		20	30	40	50	60	70	80	100	120
WIND SPEED (m.p.h.)	WIND UPLIFT (p.s.f.)	PURLIN SPACING (inches)								
115	44	52	48	44	42	40	38	36	34	34
120	48	52	48	44	42	40	38	36	34	34
125	52	52	48	44	42	40	38	36	34	34
130	56	48	48	44	42	40	38	36	34	34
135	61	46	46	44	42	40	38	36	34	34
140	65	42	42	42	42	40	38	36	34	34
150	75	36	36	36	36	36	36	36	34	34
160	85	32	32	32	32	32	32	32	32	32

- DESIGN STANDARD: ASCE 7-10 ALLOWABLE STRESS DESIGN
- PURLIN SPACING IS LIMITED TO A PANEL DEFLECTION OF 2.5" & THE PANEL UPLIFT CAPACITY
- FOR DOWNWARD DESIGN LOADS, USE APPROPRIATE LOAD COMBINATIONS TO DETERMINE WORST CASE
- DESIGN WIND LOAD CRITERIA: EXPOSURE C, COMPONENTS & CLADDING, OPEN STRUCTURE, ELEVATION  $Z < 25'$ , PITCHED FREE ROOF, ROOF ANGLE ASSUMED  $9.84^\circ$  (2:12 SLOPE), EFFECTIVE WIND AREA  $\leq a^2$  (SMALL AREA)
- PANEL SUPPORT CLIP: "20 BTC" CLIP (ALUMINUM, 6005-T5) CONNECTION WITH (2) STANDARD FASTENERS
- CLIP CONNECTION SCREWS PULLOUT STRENGTH CONTROLLED BY PURLIN WALL THICKNESS/MATERIAL
- WIND LOADS ARE AT SERVICE LEVEL





## SERIES 3000 ALUMINUM MULLION BASED CANOPY SYSTEMS

A range of lightweight glazing systems creating design flexibility.

- Long spans between structural members
- Pie shaped and multiple radius canopy options
- Exposed and hidden fasteners available
- Gaskets with no wet seals
- Custom geometry available

Available upon request:

- BIM/REVIT models
- System drawings
- Specifications
- Samples



STANDARD COLORS

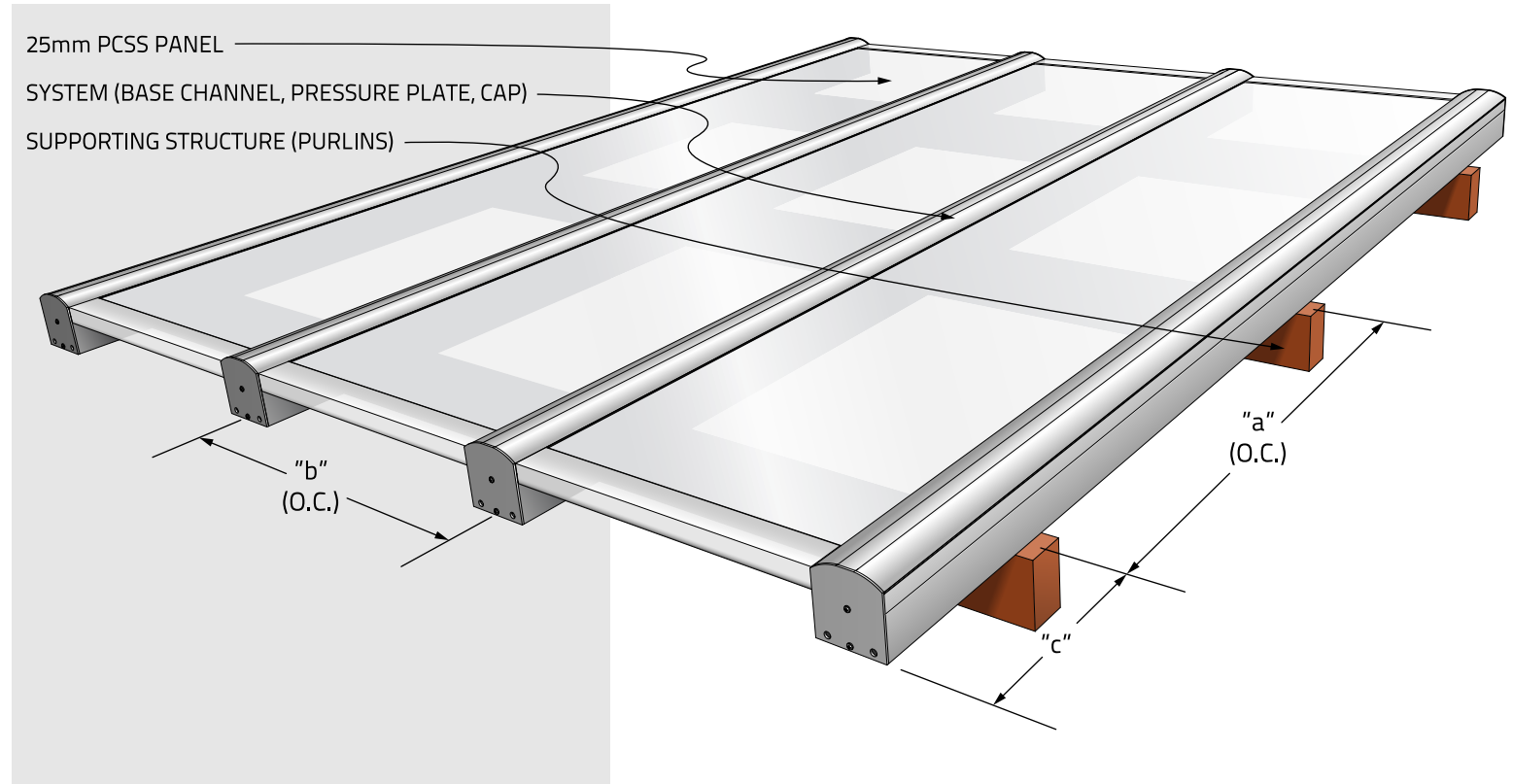
- CLEAR
- BRONZE
- OPAL
- GREY

CUSTOM COLORS AVAILABLE

Panel Selection:  
16mm or 25mm thickness  
Light flow control  
Light diffusion options  
Transparency options

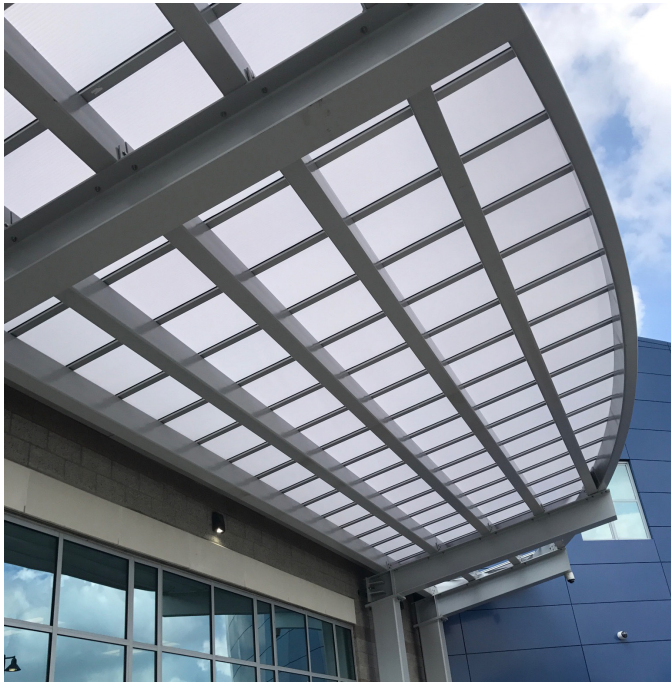


SERIES 3800 LONG SPAN SYSTEM



DIMENSION	20 p.s.f.	40 p.s.f.	80 p.s.f.	150 p.s.f.
MAX. O.C. SPAN BETWEEN PURLINS - "a"	186"	156"	138"	114"
MAX. O.C. SPAN BETWEEN MULLIONS - "b"	40"	32"	24"	18"
CANTILEVER - "c"	24"	18"	12"	6"
O.C. = ON CENTER. ALL DIMENSIONS ARE IN INCHES				
NOTES: SPANS MAY CHANGE BASED ON FINAL STRUCTURAL REVIEW. FIGURES ARE BASED ON A MULTISPAN APPLICATION. CONTACT DUO-GARD IF PANEL EXCEEDS 24' IN LENGTH, OR FOR ANY OTHER PROJECT QUESTIONS.				
*TABLE IS FOR REFERENCE ONLY*				





## STRUCTURE BY DUO-GARD

Aluminum is the industry standard; Duo-Gard is well equipped to deliver. However, larger projects and heavier load conditions demand a robust structure. Enter, steel.

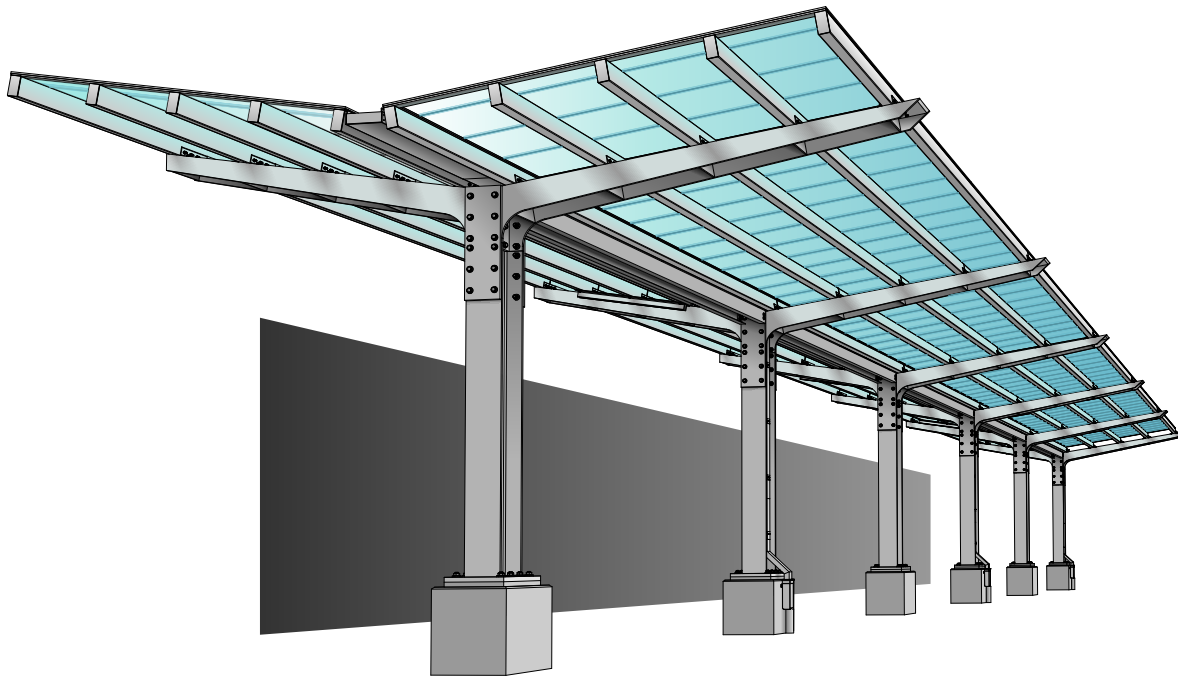
Duo-Gard keeps our steel yard and fabrication shop ready to take on any project in any environment. We not only design and fabricate, but also engineer custom solutions for each project. We provide complete turn-key steel or aluminum packages while collaborating with you every step of the way. We know that budgets can often dictate a design. To mitigate that, we offer in house engineering, a stocked steel and aluminum yard, fabrication, and installation. This helps keep cost down and keeps your design in the forefront.

Our process begins in the Engineering Department. We calculate site specific loading conditions that carry through to sizing structural steel and aluminum, connection details, and hardware, while keeping the budget in mind. Duo-Gard offers stamped calculations and drawing packages to meet the demands of an ever-changing environment and help you through the submittal process.

From high winds to heavy snow loads, nothing stops Duo-Gard from forging ahead to deliver safe, efficient, and bespoke solutions for your project.







## SERVICES

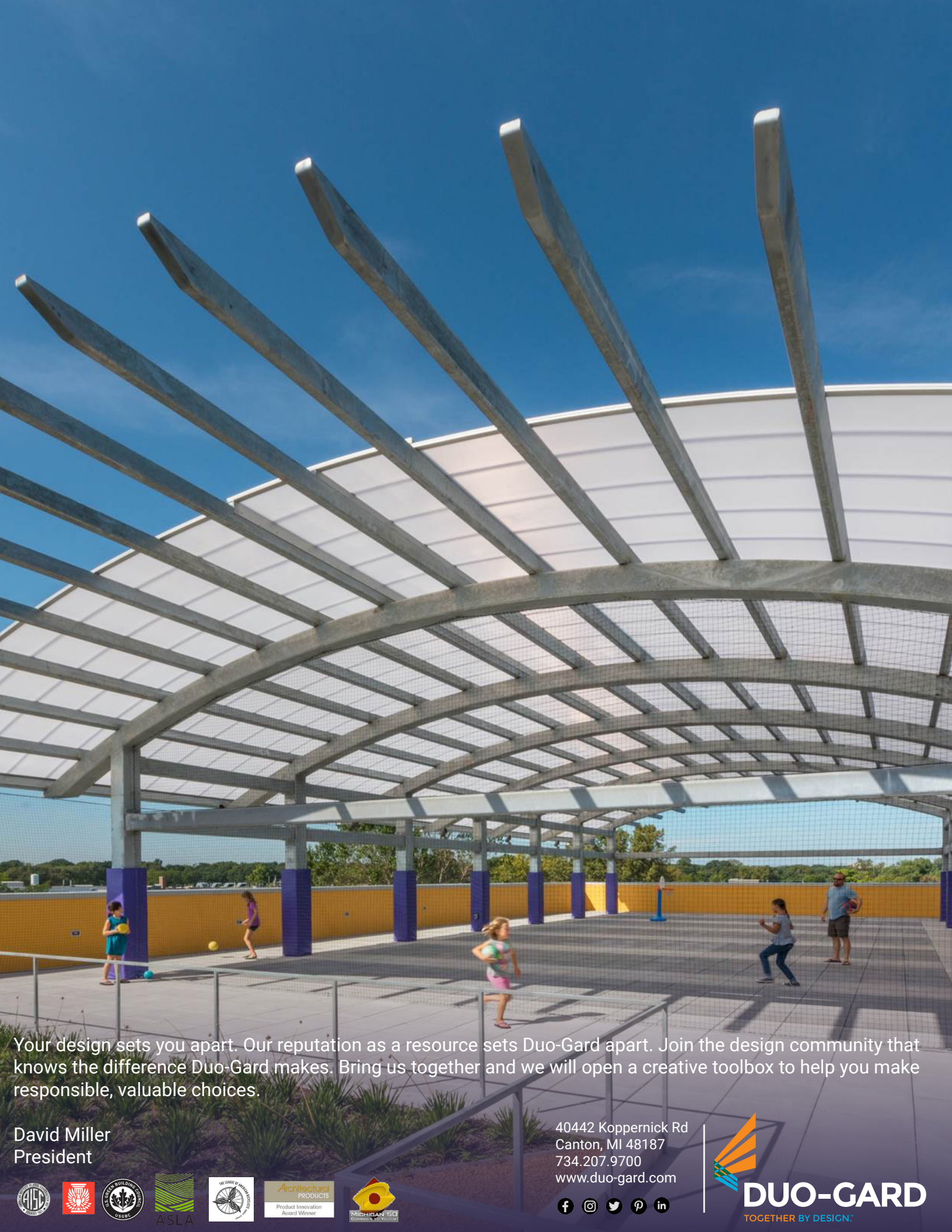
- Design
- Engineering
- Fabrication in aluminum and steel
- Stamped drawings in all 50 states
- Installation
- BIM/REVIT
- Free consultation

## FEATURES

- Multiple types of canopy skin systems
- Tapered (W or T shape) and Tube (HSS)
- Lighting
- Custom skin colors
- Custom shapes & styles
- Accommodations for signage
- Anodized, kynar and tnemec finishes







Your design sets you apart. Our reputation as a resource sets Duo-Gard apart. Join the design community that knows the difference Duo-Gard makes. Bring us together and we will open a creative toolbox to help you make responsible, valuable choices.

David Miller  
President

40442 Koppnick Rd  
Canton, MI 48187  
734.207.9700  
[www.duo-gard.com](http://www.duo-gard.com)

