



### WHY PARTNER WITH DUO-GARD?

#### CART CORRAL DESIGN & CONSTRUCTION

- Structural aluminum framing with an anodized finish – will not rust, chip or flake
- 100% made in the U.S.A
- Superior design and quality
- Internal framing connections
- Standard and custom models available

#### STRUCTURAL INTEGRITY

- Engineer stamped drawings available in all 50 states & Canada
- Built to withstand up to **175 mph** wind loads, **100 psf** snow loads and seismic **zone E** if required
- Corral anchoring is critical to eliminating potential corporate liability

#### BRANDING & SIGNAGE

- Signage extends your brand and message into the parking lot
- One and two sided signs available customized to fit your needs

#### PRODUCT LIFE

- 25 year + expected product life span
- Best life cycle cost in the industry

#### LEVELING CAPABILITIES

- Adjustable legs provide a level and uniform appearance
- Enhances curb appeal and overall architectural impact for your stores
- No need to settle for less

#### CART ROLL OUT BARS

- Prevents carts from rolling out of the corral and into the parking lot

#### REAR CART STOP BARS

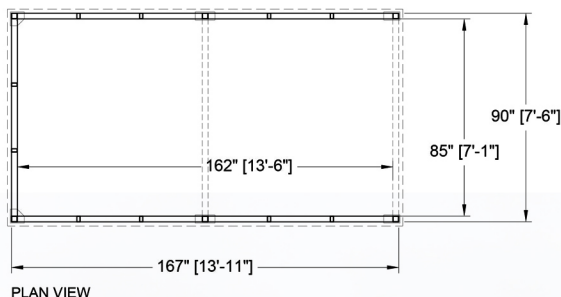
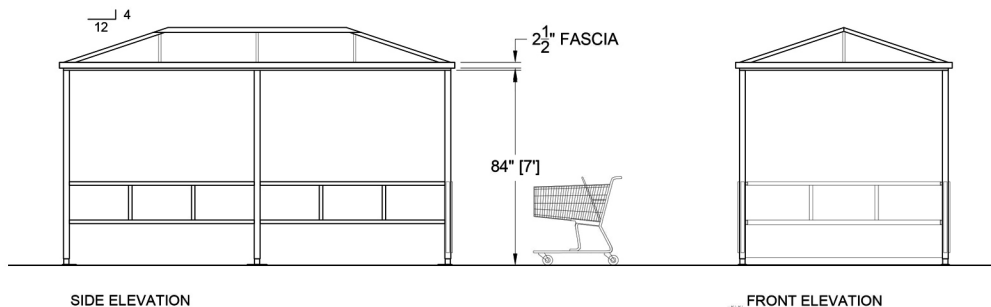
- Protects corral by preventing carts from hitting the back wall

#### INSTALLATION & PROJECT MANAGEMENT

- Installation teams available nationwide
- Dedicated Project Manager assigned to oversee your projects from start to finish



# DUO-GARD CART CORRALS



## NOTES (INITIAL APPROVAL WHERE INDICATED):

- FINISH IS DARK BRONZE ANODIZED
- ROOF IS HIP STYLE WITH 6mm P.C.S.S. GLAZING

SEE QUOTE FOR OPTIONS

DESIGN IS PRELIMINARY, AND INTENDED TO COMPLY WITH SPECIFICATIONS IN ALL ASPECTS, AND PENDING CUSTOMER APPROVAL. ANY SIGNIFICANT DEVIATION FROM SPECIFICATIONS IS UNINTENTIONAL AND MAY BE DISREGARDED: PLEASE CONSULT THE FACTORY.

## STANDARD INCLUSIONS

Dimensions	<b>Single</b> - 3'5" x 14'L Holds up to (1) Row of 25" Carts <b>Double</b> - 5'3" x 14'L Holds up to (2) Rows of 25" Carts <b>Triple</b> - 7'6" x 14'L Holds up to (3) Rows of 25" Carts Custom Sizes also Available
Framing	2½" x 2½" Square Aluminum Columns
Finish	Dark Bronze or Clear Anodized
Roof	Hip Roof with an Integral Gutter & 2½" Fascia
Roof Glazing	Standing Seam Metal, Multiwall Polycarbonate
Bumpers	HDPE Black Bumpers on Lower Interior Horizontal Framing & Exterior Front Post
Protection	Rear Cart Stop Bar, Cart Roll Out Bar
Anchoring	Asphalt Anchors, Concrete Anchors, Concrete Ballasts
Assembly	Prefabricated Roof and Wall Sections
Leveling	Adjustable legs with up to a 4" leveling capability

## ADDITIONAL OPTIONS

Framing	3" x 3", 4" x 4" & 4" x 6" Square Aluminum Tube, Round Tube
Finish	Black or Champagne Anodized, Kynar or Powder Coat Paint
Custom Colors	Custom Paint Colors & Wood Grain Powder Coat Finish
Grillwork	Diamond, Square, Fence Style, Custom Designs, Water-Jet Cutouts
Roof Finials	Aluminum, Powder Coat Paint to Match
Roof	Solar Roof Panels
Lighting	Standard and Solar Lighting Options
Signage	Horizontal or Vertical Signs - One or Two Sided Customized to meet your Specifications
Trash Receptacles	10 & 22 Gallon Column Mounted Perforated Aluminum - Among Others
Fascia	4½" & 6" Fascia
All Weather Wall Panels	Glass or Polycarbonate
Stamped Drawings	Engineer Stamped Drawings available in all 50 States & Canada

